

## Seat belts

### Safety precautions for handling pyrotechnic seat belt tensioners

#### **WARNING!**

- ◆ *Testing, removing, installing and repair work must only be carried out by properly qualified personnel.*
- ◆ *When connecting the seat belt tensioner unit, all mechanical components (including those of the three-point seat belt) must be properly attached.*
- ◆ *Only the technician carrying out the work may be present inside the vehicle.*
- ◆ *The seat belt tensioner components cannot be opened or repaired; always use new components.*
- ◆ *Seat belt tensioner units which have been dropped from a height of more than 20 inches must not be installed in a vehicle.*
- ◆ *Seat belt tensioner units which are mechanically damaged (dents, cracks) must always be replaced.*

- ◆ *The seat belt tensioner unit should not be removed from its packaging until just before it is to be installed.*
- ◆ *If the installation work is interrupted, return the seat belt tensioner unit to its packaging.*
- ◆ *Never point the open end of a seat belt tensioner at another person.*

**WARNING!**

- ◆ *Always wash your hands after handling seat belt tensioners which have been triggered.*
- ◆ *Observe all transportation regulations for explosive substances.*
- ◆ *Do not leave an uninstalled seat belt tensioner unit unattended.*
- ◆ *Seat belt tensioner units must not be treated with grease, cleaners or similar substances.*
- ◆ *Seat belt tensioner units must not be exposed to temperatures above 100 ° C (212 ° F), even for short periods.*

## Pyrotechnic seat belt tensioners, disposal

### **WARNING!**

- ◆ *Improper disposal of pyrotechnic seat belt tensioner units (gas generators) which have not been triggered creates a hazard.*
- ◆ *Pyrotechnic seat belt tensioner units (gas generators) must be rendered inoperable before disposing because pyrotechnic devices can cause injury if disposed of improperly (e.g. using a blow torch).*
- ◆ *Seat belts which need to be removed (e.g. after an accident in which the seat belt tensioner was not activated) must be triggered before removal.*
- ◆ *This does not apply to seat belts with malfunctions (e.g. sticking or failure to retract) which must be returned to the Warranty Parts Test Center for analysis.*
- ◆ *Observe all transportation regulations for explosive substances.*
- ◆ *Procedure for rear belt tensioners is*

***analogous to front (shelf, remove trim on side of trim or remove 2/3 of backrest cover).***

## Procedure for triggering pyrotechnic belt tensioners

### Notes:

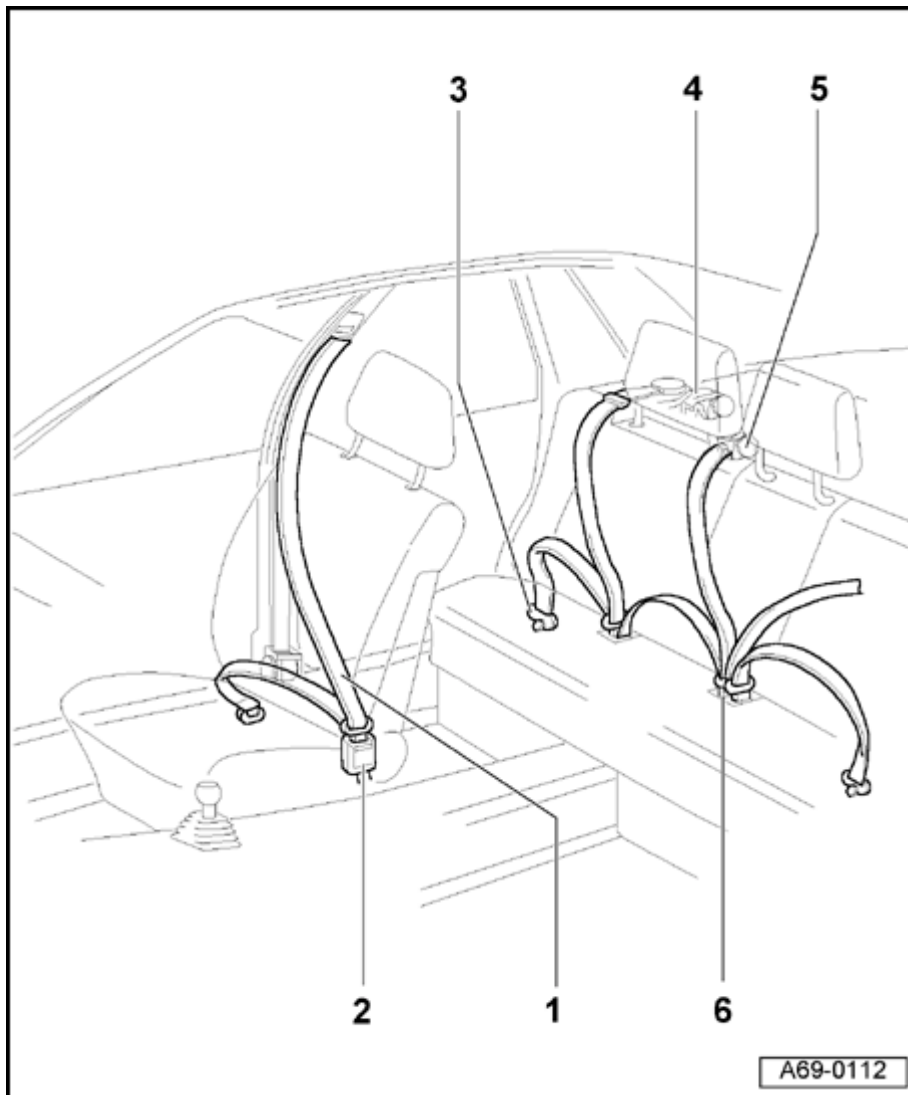
- ◆ *Whenever possible, pyrotechnic belt tensioners must be deployed outside the vehicle. Use Airbag and Pyrotechnic Deployment Device J-44210 and follow instructions in booklet.*
- ◆ *The procedure that follows is for deployment of tensioners mounted inside a vehicle.*
- Remove upper B-pillar trim ⇒ [page 70-75](#) .
- Remove lower B-pillar trim ⇒ [page 70-75](#) .
- Remove outer seat belt anchor ⇒ [page 69-13](#) .
- Using scissors, cut belt webbing above seat belt tongue (about 20 cm above belt retractor).
- Disconnect harness connector from belt retractor and connect wiring harness (Part No. 8D1 971 259) to belt tensioner.
- Cut harness connector at opposite end, insulate

both ends of cable, pull cable housing apart until ends of cable are at least 30 cm apart.

- Vehicle must not be occupied
  
- Open windows and close doors.
  
- Using wiring harness and an external battery (located outside vehicle), activate gas generator (maintain minimum 10 m distance).

- Air out vehicle after triggering.
- ◆ After removal, the belts can be disposed of as commercial waste.
- ◆ Wash your hands after handling belt tensioners that have fired.
- ◆ Follow safety and handling instructions for pyrotechnic belt tensioners.





## Seat belt attachment points, overview

### 1 - Three-point seat belt with seat belt height adjuster and belt tensioner

◆ Removing ⇒ [page 69-7](#)

### 2 - Buckle attachment point

◆ Removing ⇒ [page 69-12](#)

### 3 - Attachment point for outer floor assembly

◆ Removing ⇒ [page 69-13](#)

### 4 - Left and right-rear three-point seat belt

Sedan:

◆ Removing ⇒ [page 69-15](#)

Avant:

◆ Removing ⇒ [page 69-18](#)

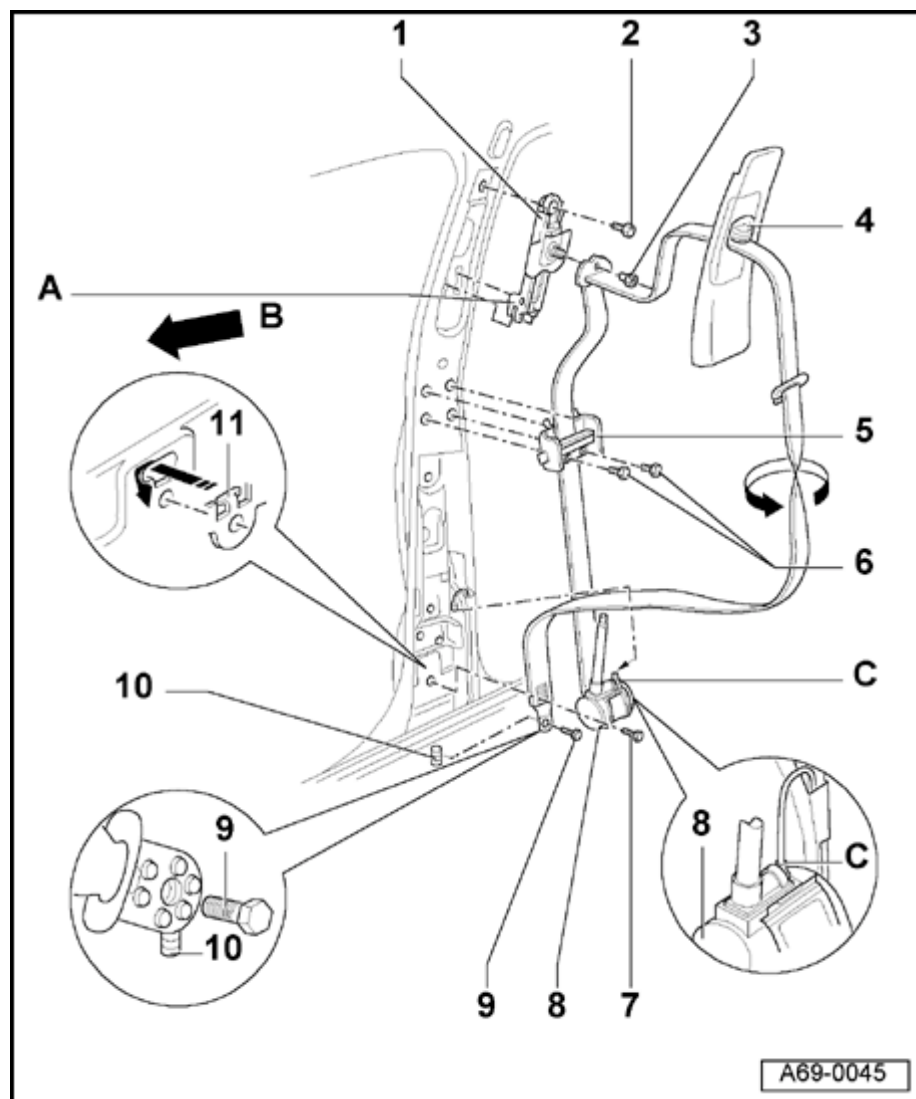
### 5 - Rear center three-point seat belt

◆ Floor rear backrest

◆ Removing ⇒ page ⇒ [Page 69-22](#)

### 6 - Attachment point for center floor assembly

◆ Removing ⇒ [page 69-25](#)



## Three-point seat belt with seat belt height adjuster and belt tensioner, removing and installing

### 1 - Seat belt height adjuster

Removing:

- Remove upper B-pillar trim ⇒ [page 70-75](#) .
- Remove shouldered nut -3- and bolt -2-.
- Remove seat belt height adjuster -1- up and out of position -A-.

Installing:

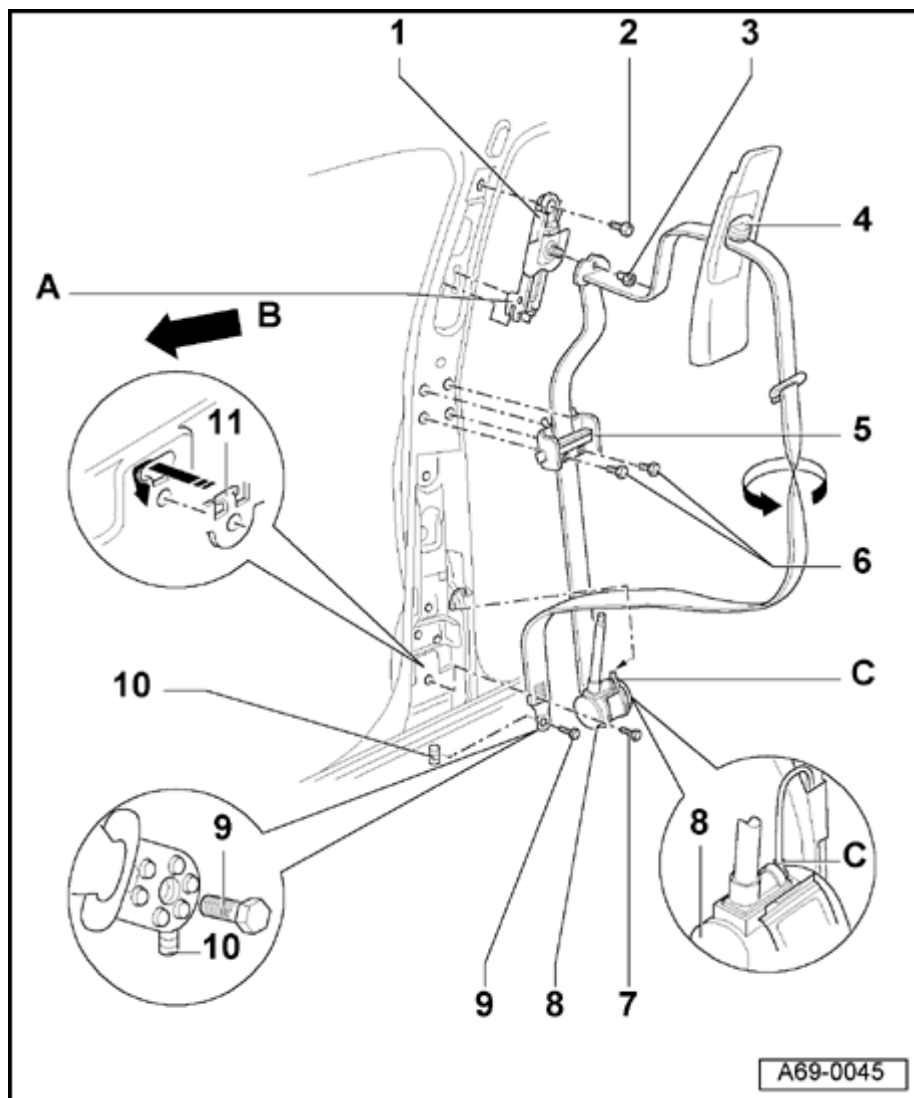
- Guide seat belt height adjuster switch -4- into height adjuster assembly -1-.

### Notes:

- ◆ Do not press switch -4- when installing.

Function check after installing trim:

- ◆ Height adjuster must audibly engage into all five of the possible positions (even in the top position).
- ◆ Switch must return by itself to upper position after being actuated.

**2 - Bolt**

◆ 23 Nm (17 ft lb)

**3 - Shouldered nut**

◆ 50 Nm (37 ft lb)

**4 - Switch for height adjustment****5 - Belt guide**

- Remove bolts -7- (2x).

◆ Unclip lower part of belt guide, swing upward and detach

**6 - Bolts (2x)**

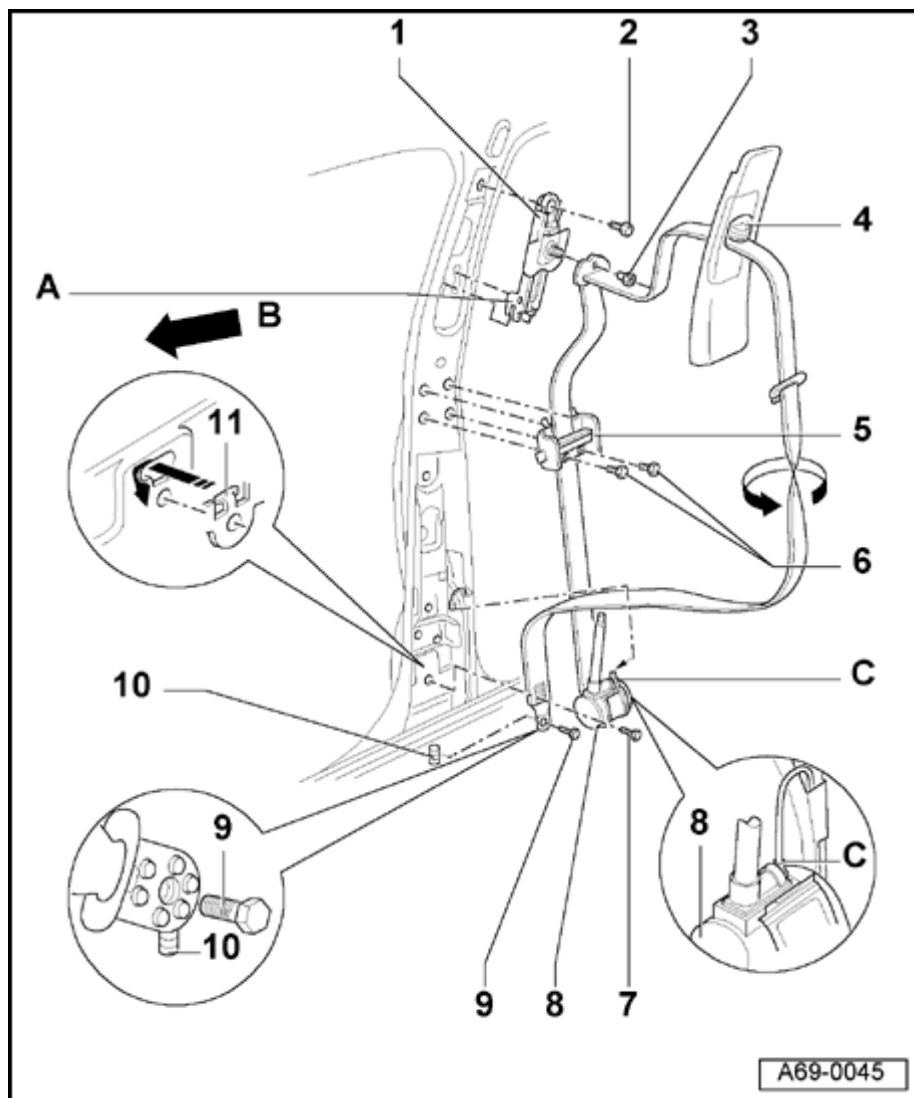
◆ 2 Nm (18 in. lb)

**7 - Bolt**

◆ 50 Nm (37 ft lb)

**8 - Bolt**

◆ 50 Nm (37 ft lb)



## 9 - Belt tensioner

Removing three-point seat belt:

- Disconnect battery.
- Removing sill molding ⇒ [page 70-80](#) .
- Remove bolt -9- (1x).
- Remove upper B-pillar trim ⇒ [page 70-75](#) .
- Remove belt webbing from upper B-pillar trim.
- Remove lower B-pillar trim ⇒ [page 70-75](#) .
- Remove shouldered nuts -3-.
- Disconnect harness connector -C- at belt tensioner.
- Remove bolt -7-.
- Remove belt tensioner -9- upward out of anti-twist stop -11-.

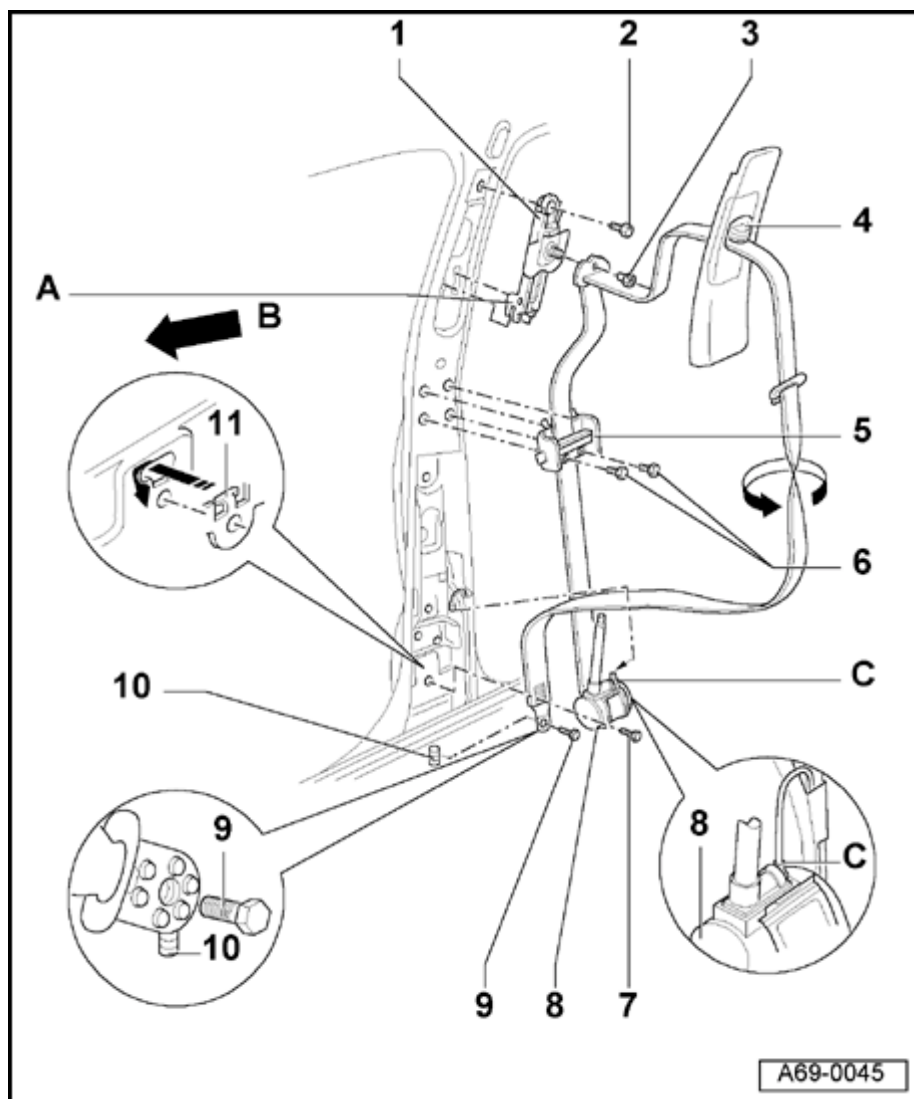
Installing three-point seat belt:

### **Note:**

*Arrow -B- indicates direction of travel.*

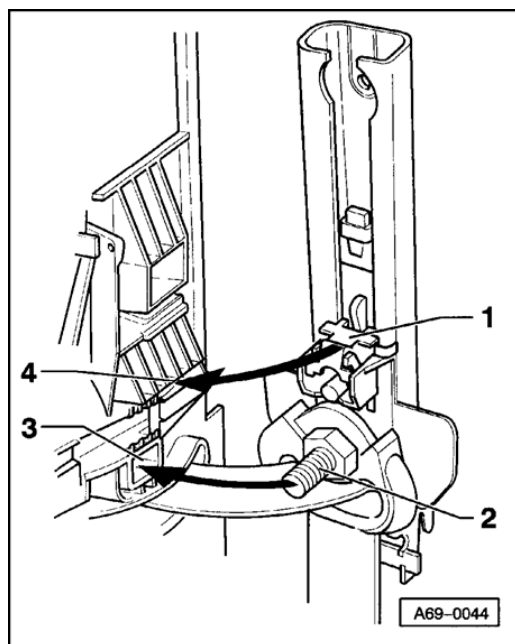
- Install belt tensioner -9- with anti-twist stop -11- as shown in magnified area.

- Install belt webbing (turned 180°) as shown in illustration (arrow).



- ◆ Lower belt webbing must be bolted to metal stud -10- as shown in magnified area
  - ◆ Remainder of installation is reverse of removal
    - After installing passenger side three-point seat belt, check belt function for child seat ⇒ [page 69-37](#) .
  - ◆ Three-point seat belt must not be hindered by cables, wires or dampening material etc
- 10 - Metal stud in floor pan**
- ◆ Anti-twist stop for belt webbing bracket
- 11 - Anti-twist stop and reverse-mounting protection for three-point safety belt**

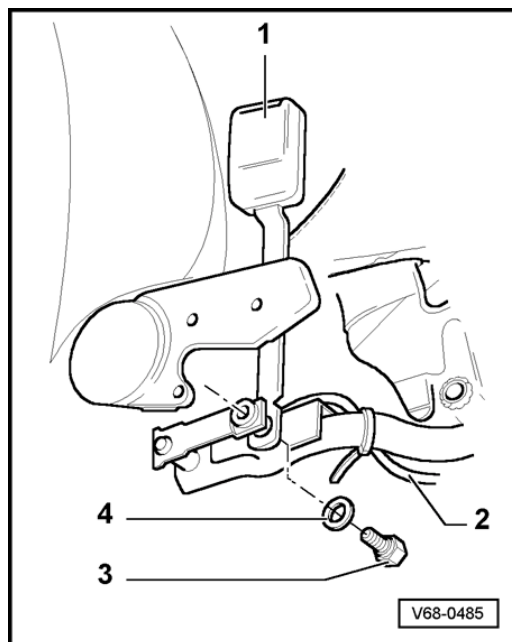
69-11



**Fig. 1** Installing upper B-pillar trim in belt height adjuster

- Guide slide with button -4- (without pressing) beginning at top and working downward into release lever -1- of height adjuster while simultaneously installing pin -2- into mounting -3-.

### Belt buckle attachment point

**A**

- Remove seat ⇒ [page 72-2](#) .

1 - Buckle

4 - Spring washer

- Remove bolt -3-.

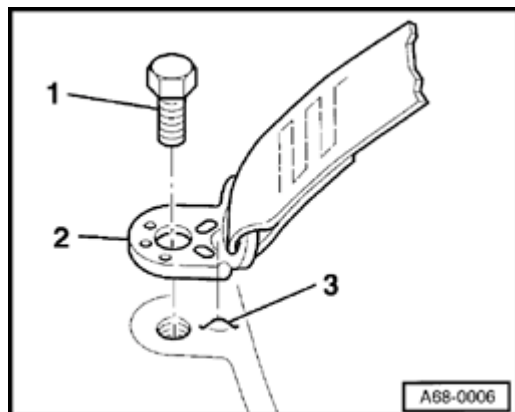
Tightening torque: 60 Nm (44 ft lb)

- If necessary, disconnect harness connector -2- for belt warning.



69-13

### Outer floor assembly attachment point



A

- Remove bolt -1-.

Tightening torque: 50 Nm (37 ft lb)

Mounting bracket -2- must be located in impression -3- of floor assembly.

## Recaro seat buckle, removing and installing

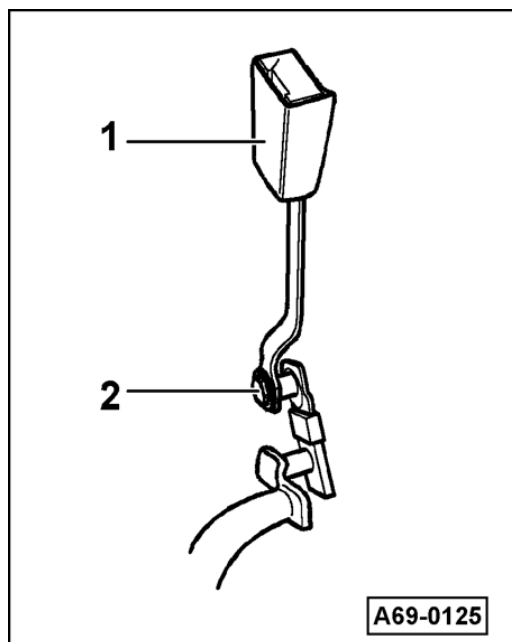
- Remove seat ⇒ [page 72-25](#) .

A

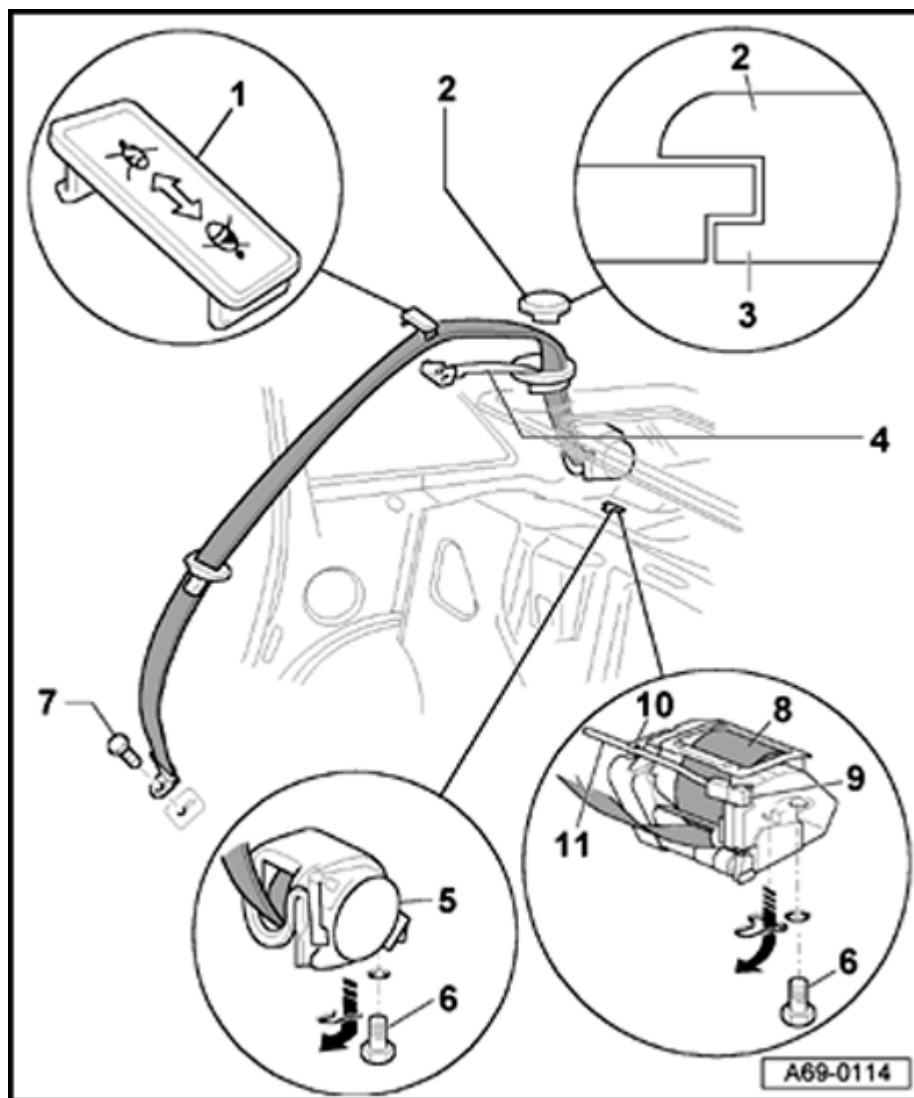
- Turn buckle -1- downward to allow access to bolt -2-.

- Remove bolt -2-.

Tightening torque: 60 Nm (44 ft lb)



69-15



## Left and right-rear three-point seat belts, removing and installing

### Sedan

#### 1 - Belt guide trim

- ◆ Large symbol must always point toward vehicle center

#### 2 - Belt adjuster cover

#### 3 - Retaining tab

#### 4 - Belt adjuster

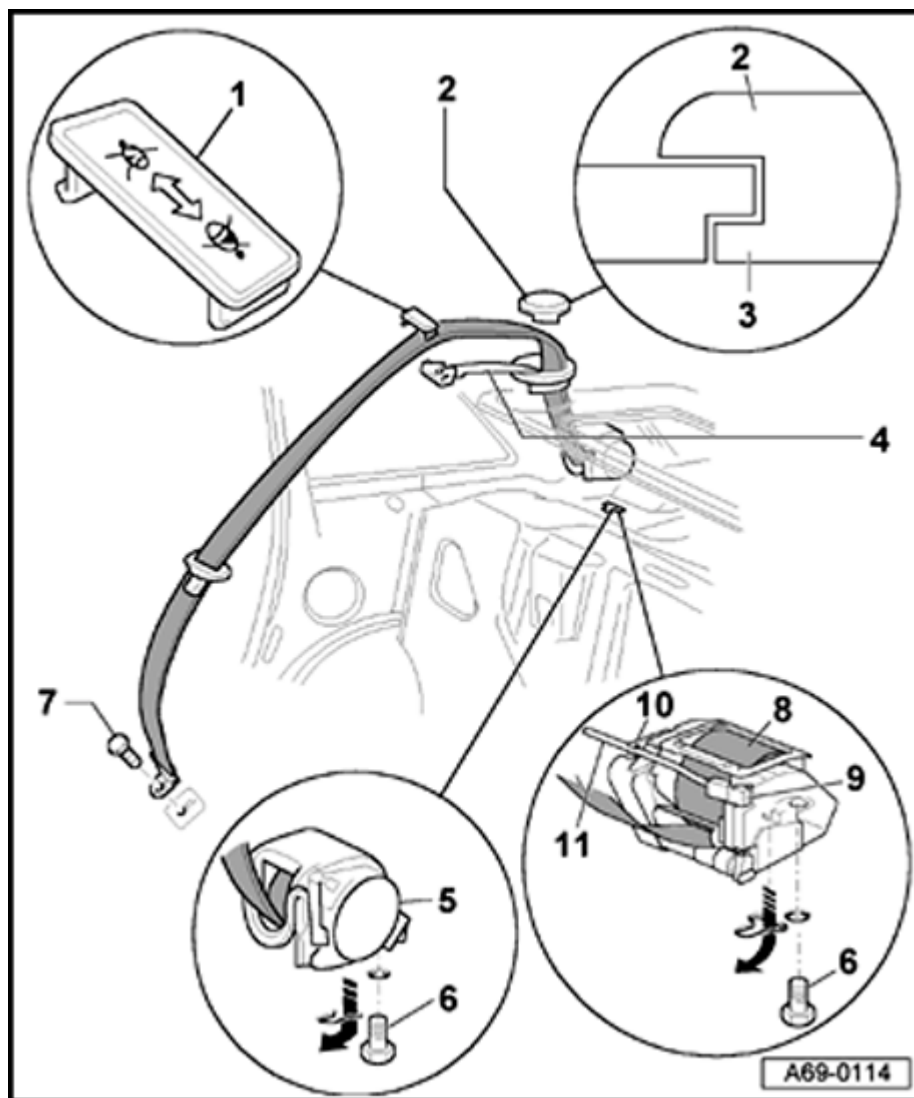
- ◆ Removing and installing ⇒ [page 69-20](#)

#### 5 - Three-point seat belt

##### Removing:

- Remove rear seat ⇒ [page 72-57](#) .
- Remove bolt -7-.
- Unclip belt guide trim -1-.
- Detach belt adjuster cover -2- at left and right of retaining tab -3-.
- Remove rear shelf ⇒ [page 70-83](#) .
- Open cover for side trunk trim.

69-16



Vehicles with CD player and/or subwoofer or similar:

- Remove side trunk trim ⇒ [page 70-87](#) .

Vehicles with belt tensioners:

- Unclip igniter wire -11- at clip -10-.
- Detach harness connector for igniter wire at clip -9-.
- Remove bolt -6- (1x).
- Detach seat belt against direction of arrow.

Installing:

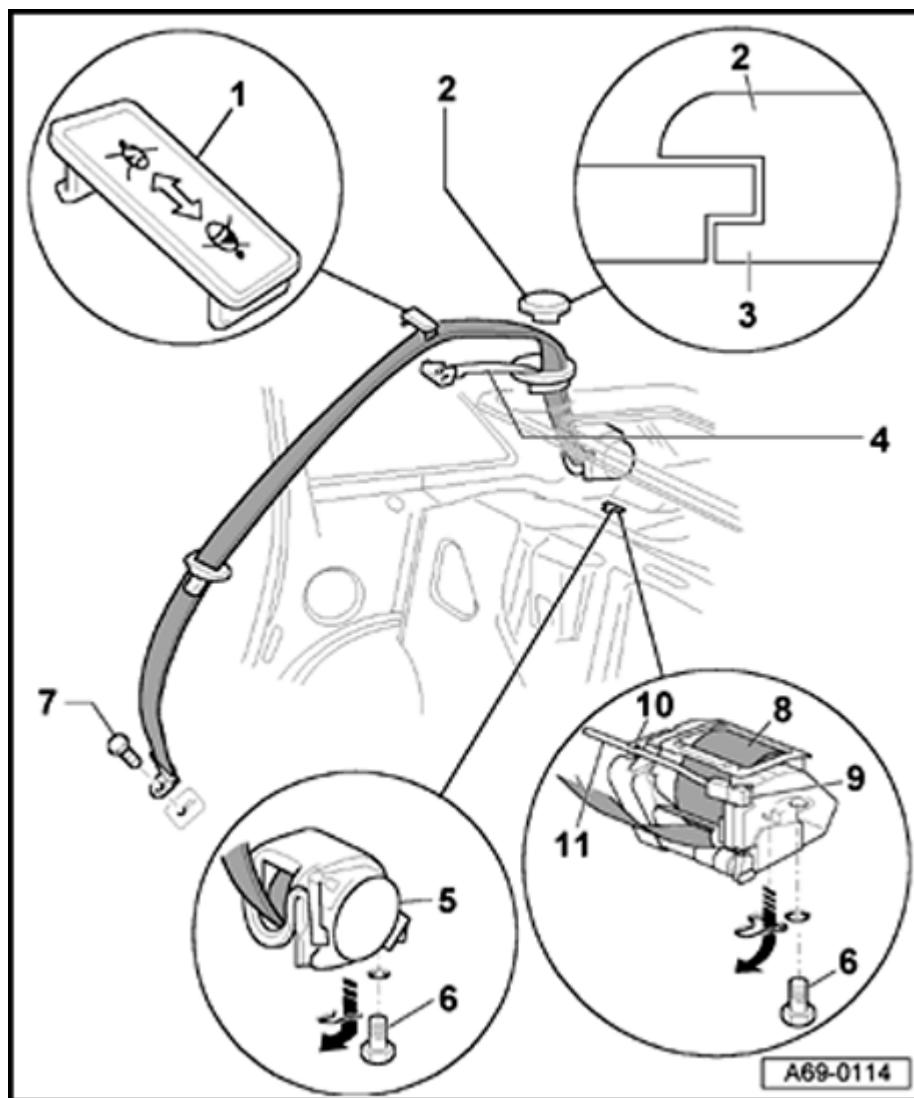
- ◆ Make sure harness connector for igniter wire -11- engages
- Clip igniter wire -11- into clip -10-.

**Note:**

*The igniter wire -11- must not be located near the belt webbing.*

- ◆ For vehicles with belt tensioner, check belt-fastened sensor ⇒ [page 69-38](#)
- ◆ After installing rear three-point seat belt, check belt function for child seat ⇒ [page 69-37](#)

- ◆ Three-point seat belt must not be hindered by cables, wires or dampening material, etc



**6 - Bolt**

◆ 50 Nm (37 ft lb)

**7 - Bolt**

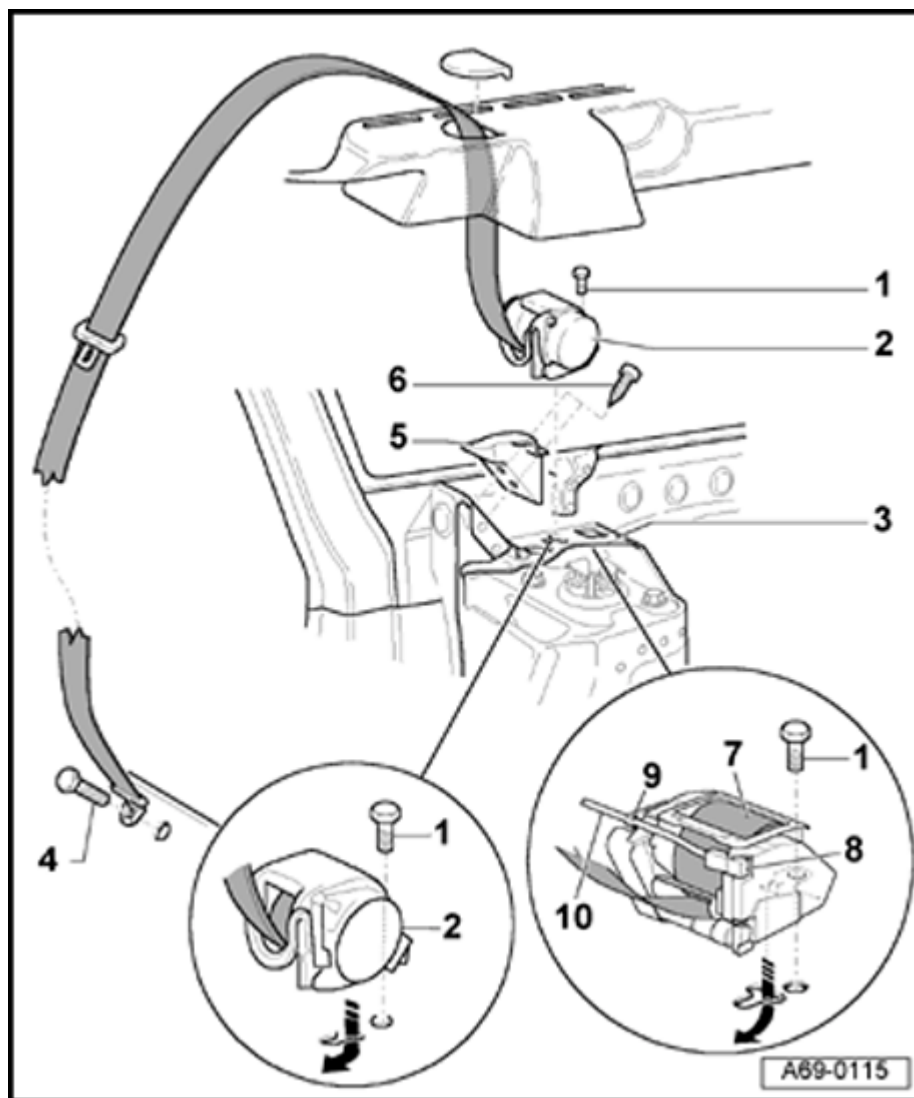
◆ 50 Nm (37 ft lb)

**8 - Three-point seat belt with belt tensioner**

**9 - Clip**

**10 - Clip**

**11 - Igniter wire**



## Avant

### 1 - Bolt

- ◆ 50 Nm (37 ft lb)

### 2 - Belt tensioner

Removing:

- Remove left and right-rear side bolsters ⇒ [page 72-75](#) .
- Remove left and right-side trunk trim ⇒ [page 70-87](#) .
- Remove rear seat ⇒ [page 72-57](#) .
- Remove bolt -4- (1x).

Vehicles with belt tensioners:

- Unclip igniter wire -11- at clip -10-.
- Detach harness connector for igniter wire at clip -8-.
- Remove bolt -1- (1x).
- Detach seat belt against direction of arrow.

Installing:

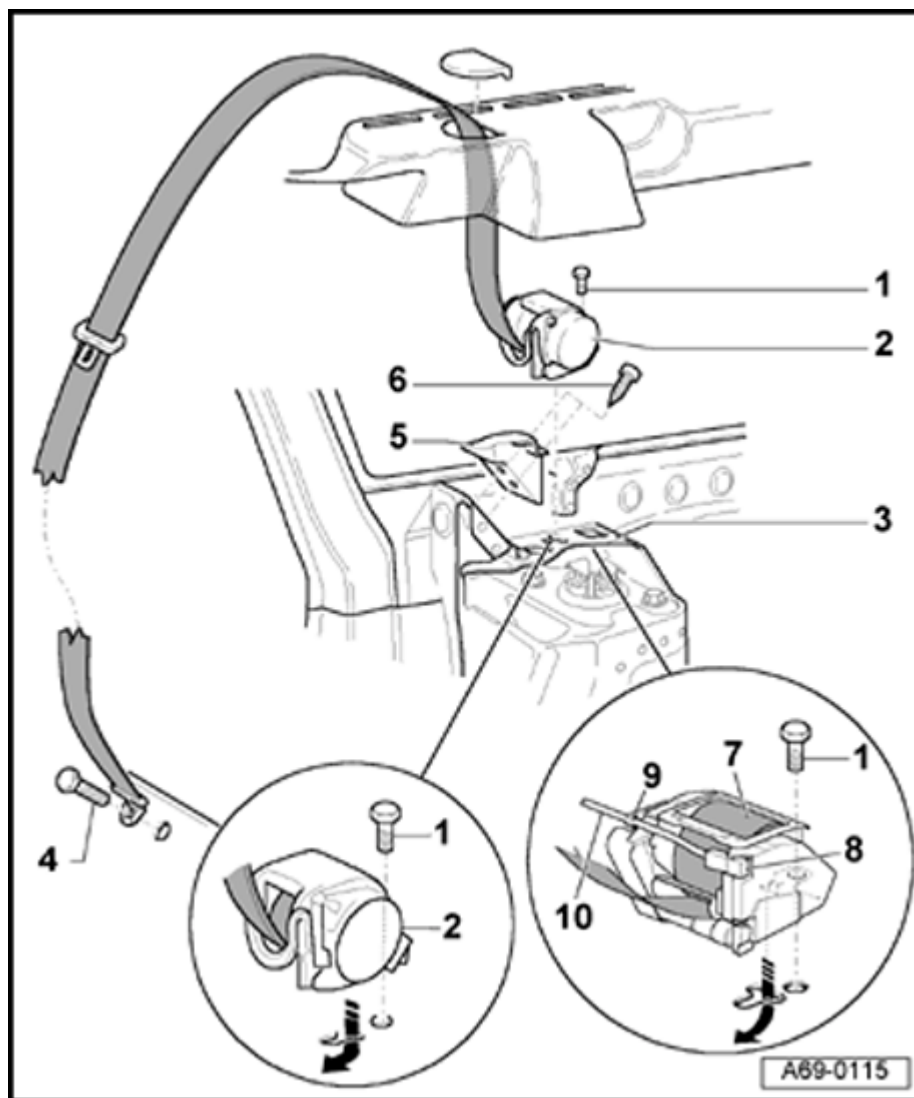
- Make sure harness connector for igniter wire -11- engages.
- Clip igniter wire -11- into clip -10-.

**Note:**

*The igniter wire -11- must not be located near the belt webbing.*



69-19



- ◆ For vehicles with belt tensioner, check belt-fastened sensor ⇒ [page 69-38](#)
- ◆ After installing rear three-point seat belt, check belt function for child seat ⇒ [page 69-37](#)
- ◆ The three-point seat belt must not be hindered by cables, wires or dampening material, etc

**3 - Bracket**

**4 - Bolt**

- ◆ 50 Nm (37 ft lb)

**5 - Bracket**

**6 - Bolt**

- ◆ 2.5 Nm (22 in. lb)

- ◆ It is not necessary to remove metal bracket when removing belt

**7 - Three-point seat belt with belt tensioner**

**8 - Clip**

**9 - Clip**

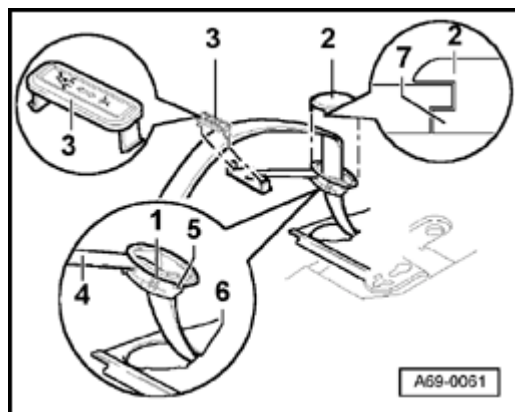
**10 - Igniter wire**

## Rear belt adjuster, removing and installing

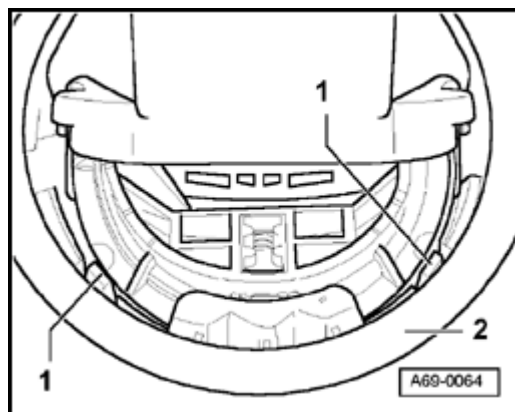
### Removing

#### Note:

*It is not necessary to remove the rear shelf when removing the rear belt adjuster.*



- A**
- Undo lower attachment point of rear three-point seat belt.  
Tightening torque: 50 Nm (37 ft lb)
  - Unclip belt guide trim -3-.
  - Detach belt adjuster cover -2- at left and right of retaining tab -7-.
  - Swing belt adjuster -4- with belt webbing upward.

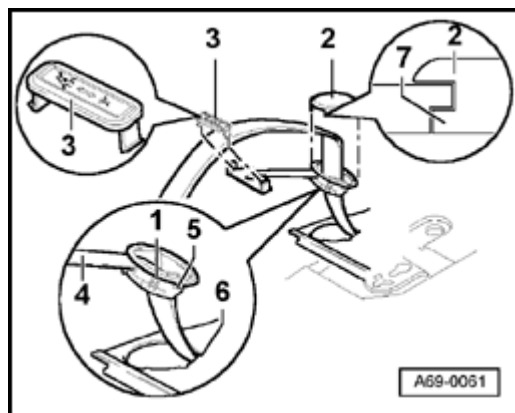


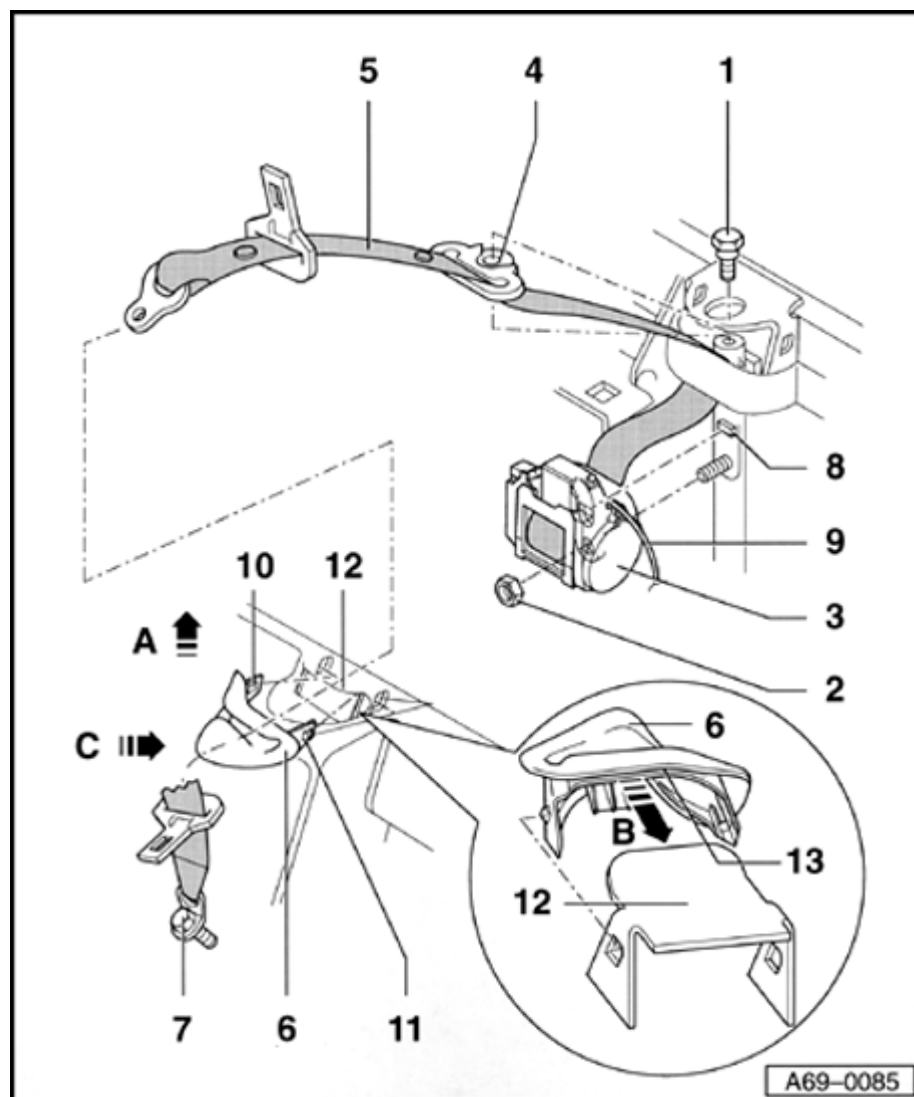
- A**
- Use screwdriver to press retaining tab -1- (2x) inward while simultaneously pulling up on belt adjuster -2-.
  - Pull belt webbing through belt adjuster -2-.

## Installing

**A**

- ◆ Make sure retaining tabs -1- (2x) fully engage.
- ◆ Make sure rear lug engages in notch -6-.
- ◆ Reverse mounting protection -5- must point toward center of vehicle.

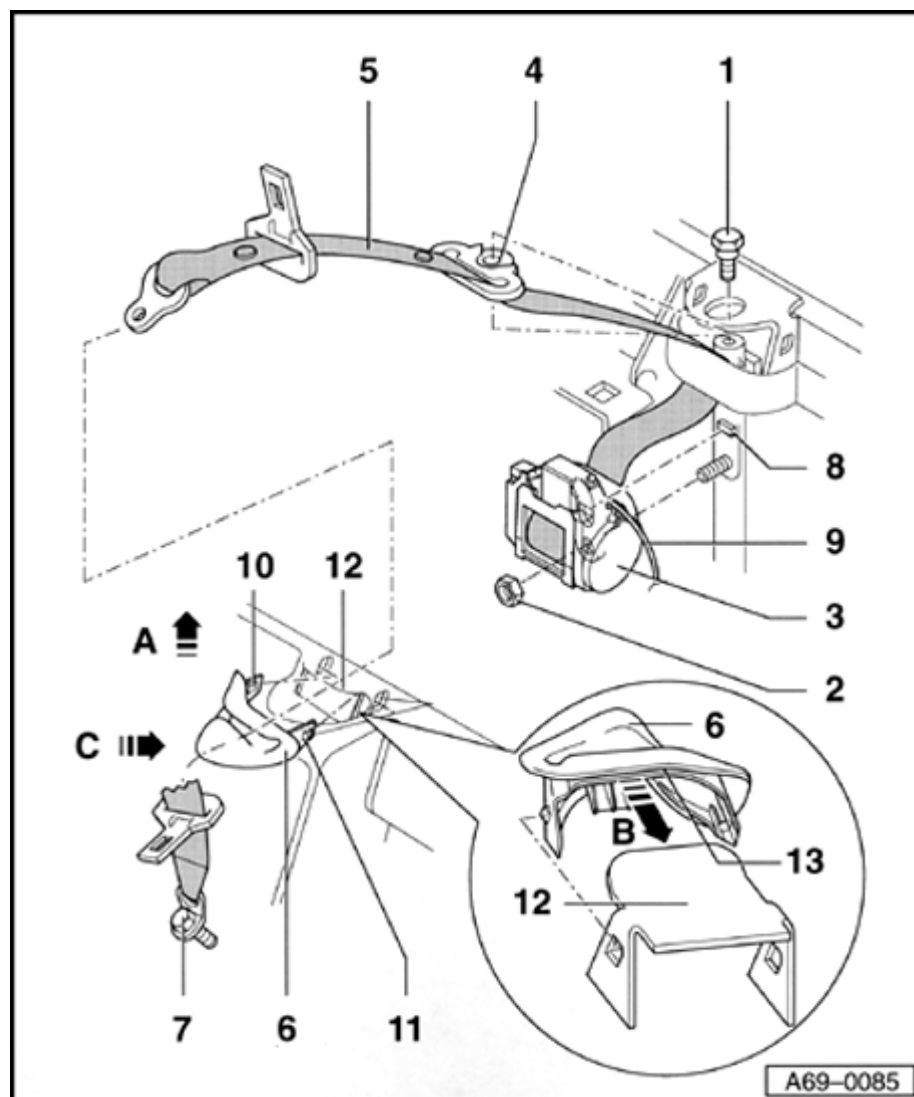




### Third rear center three-point seat belt (Avant), removing and installing

#### Removing

- Remove rear seat ⇒ [page 72-57](#) .
- Remove bolt -7-.
- Remove 2/3 seatback (▶ m.y. 97) ⇒ [page 72-62](#) , (m.y. 98 ▶) ⇒ [page 72-64](#) .
- Push cover at belt guide trim -6- to side, and using screwdriver, detach retaining tab -11-.
- Remove cover -6- in direction of arrow -A-.
- Remove padding of 2/3 rear seatback until cover with padding can be removed ⇒ [page 74-37](#) .
- Remove bolt -1- (1x).
- If necessary, disconnect harness connector at belt tensioner.
- Cut tie wrap off belt tensioner igniter wire at belt tensioner.



- Remove nut -2- (1x) and third rear three-point seat belt tensioner -3-.

### Installing

- To install belt guide trim -6-, first attach retaining tab -10- and insert, then turn retaining tab -11- inward making sure metal piece -12- is inserted into cutout -13- of belt guide trim -6- (arrow -B- in inset).
- Tap lightly on belt guide trim -6- in direction of arrow -C- to engage.

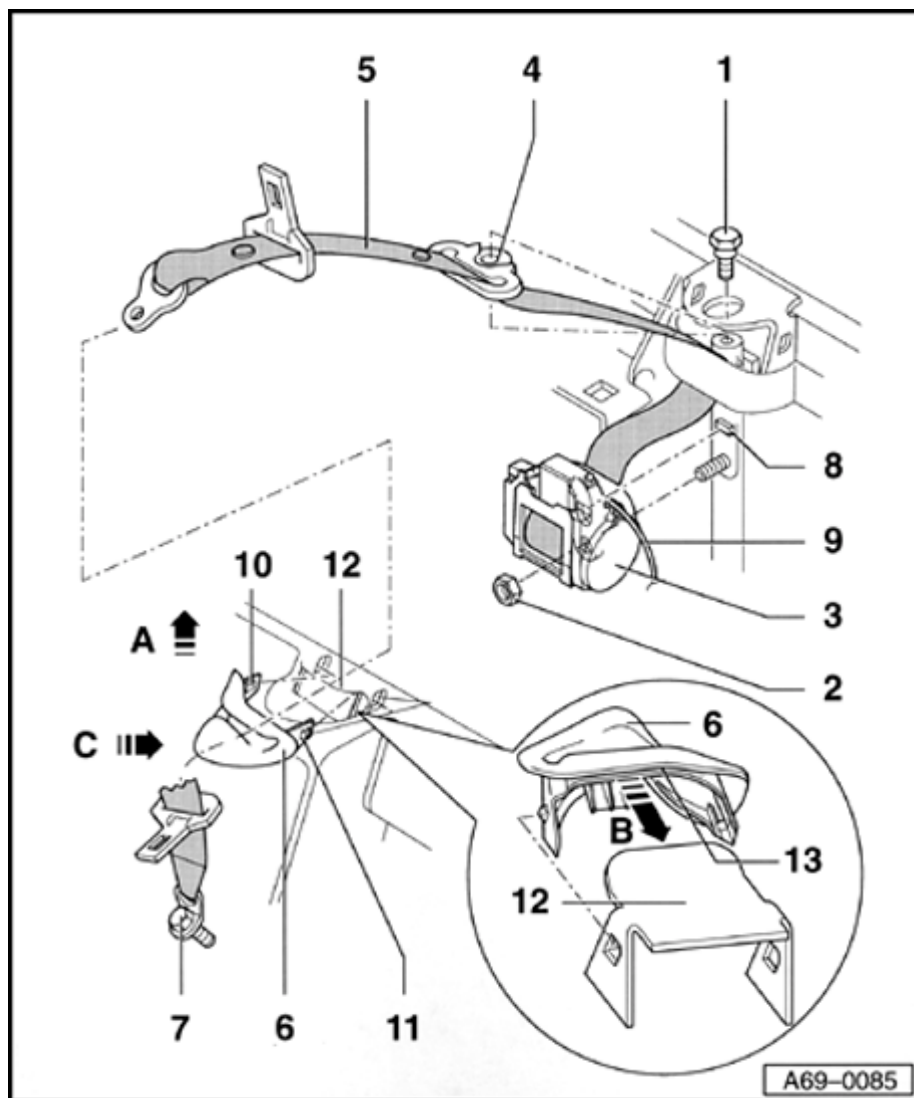
Vehicles with belt tensioner:

- Check belt-fastened sensor ⇒ [page 69-38](#) .

### Notes:

Check the following after full backrest installation:

- ◆ The anti-twist stop -4- and belt webbing -5- must not touch or rub against any foam or cover components.
- ◆ Anti-twist stop -4- must follow all movements of belt webbing.
- ◆ Belt webbing -5- must move freely in all directions.

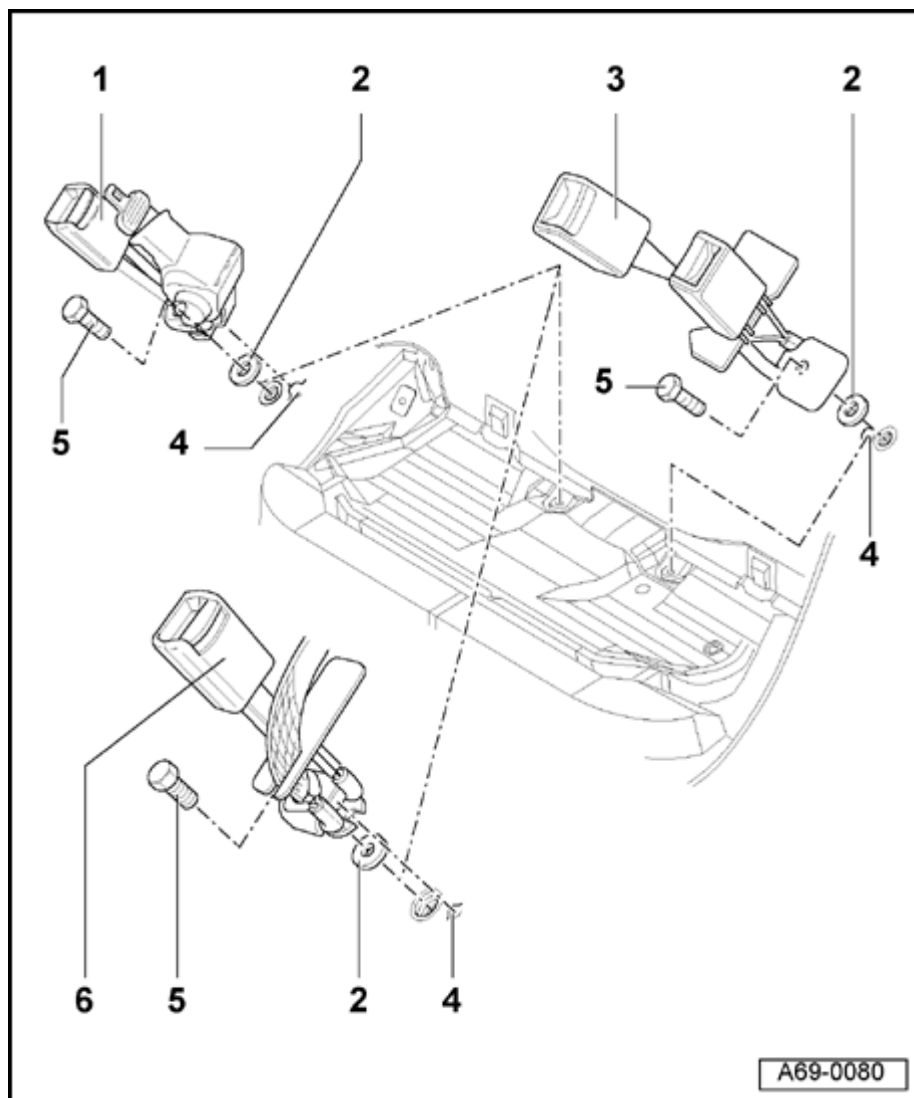
**1 - Bolt**

◆ 55 Nm (41 ft lb)

**2 - Nut**

◆ 55 Nm (41 ft lb)

**3 - Belt tensioner****4 - Anti-twist stop****5 - Belt webbing****6 - Belt guide trim****7 - Bolt (1x)****8 - Retaining tab****9 - Harness connector for belt tensioner****10 - Retaining tab****11 - Retaining tab****12 - Bracket on rear backrest****13 - Cutout**

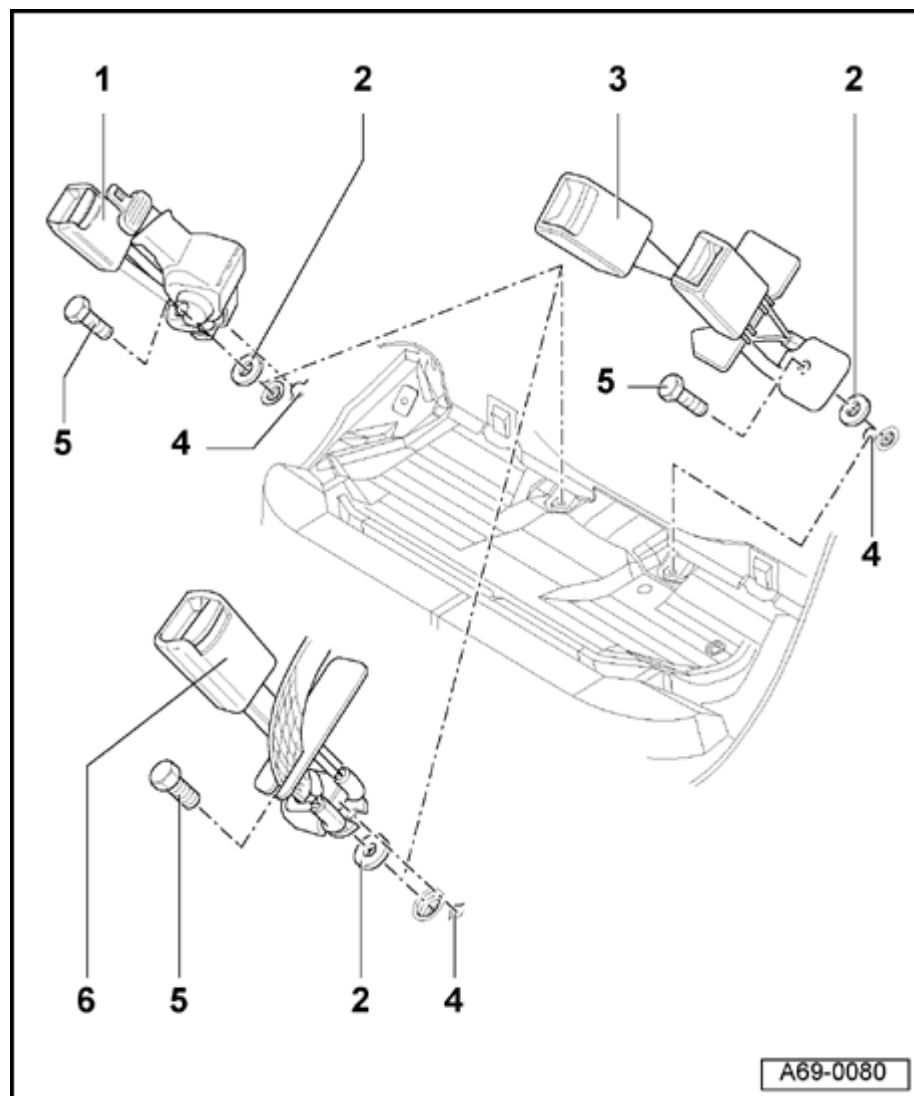


## Center floor panel attachment points

### Removing

- Remove rear seat ⇒ [page 72-57](#) .
- Remove bolt -5- (1x).
- ◆ Always change gasket -2-.
- ◆ When installing, make sure buckle and/or lap belt engages in guide knob -4-.
- ◆ Narrow side of buckle and/or lap belt must face in direction of travel.

69-26

**1 - Lap belt with retractor****Note:**

*When installing, make sure that bracket is accessible. If necessary, turn lap belt with retractor.*

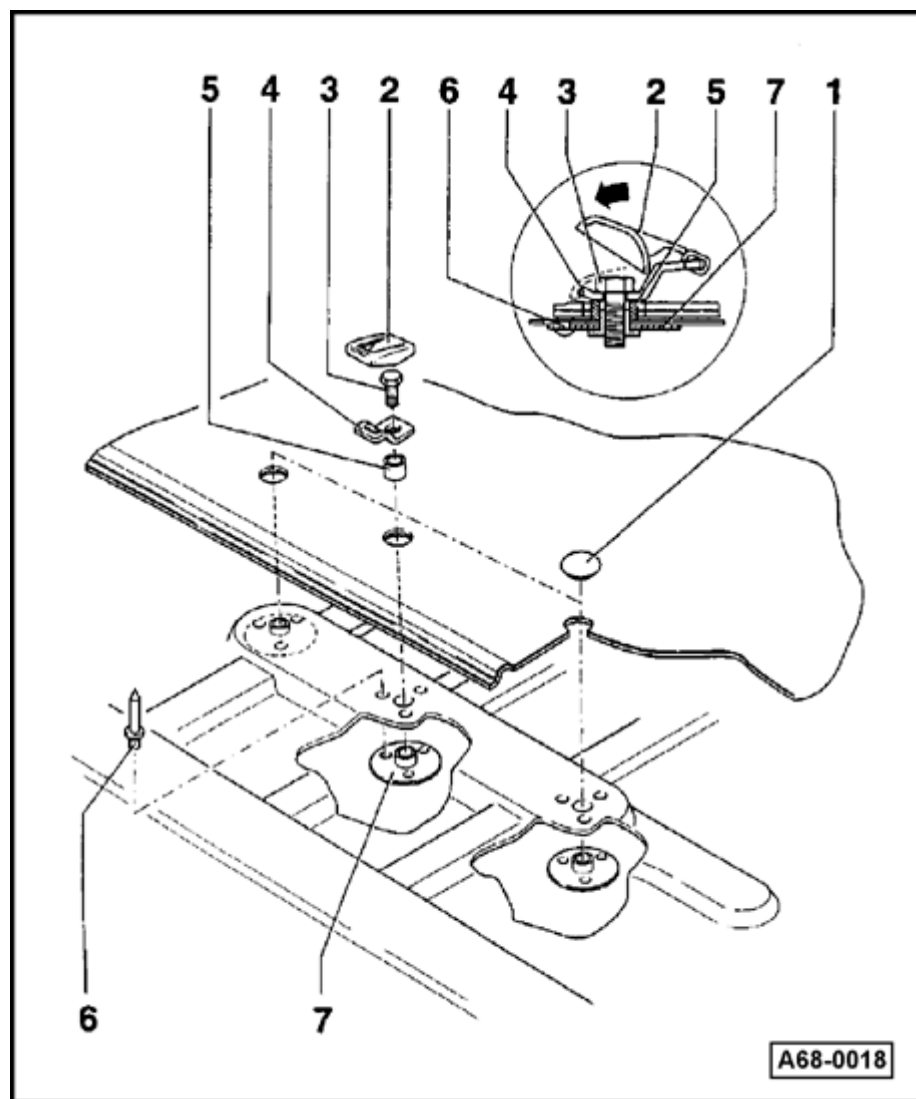
**2 - Seal****3 - Buckle****4 - Guide knob****5 - Bolt**

◆ 50 Nm (37 ft lb)

◆ Only use genuine Audi replacement bolts

**6 - Lap belt**





## LATCH system, "Lower Anchors and Tethers for Children", installing, removing, retrofitting (Sedan)

### Rear upper tethers, installing

#### **Note:**

*Mountings can be installed for three upper tether attachment points.*

- Remove rear shelf ⇒ [page 70-83](#) .

#### **1 - Cover**

#### **2 - Cap**

- To install, attach at front and press in direction of arrow and downward.

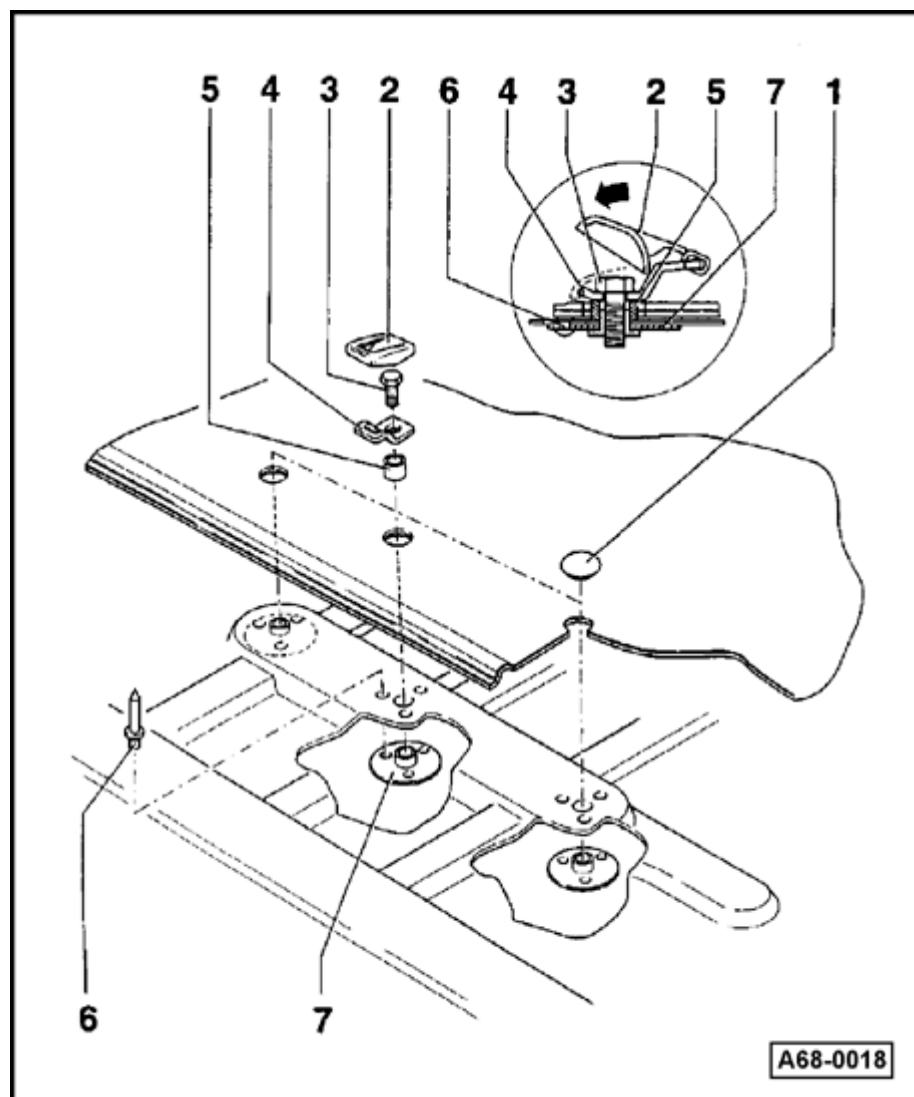
#### **3 - Bolt**

- ◆ 23 Nm (17 ft lb)

#### **4 - Attachment point**

#### **5 - Spacer**

69-28



### 6 - Pop rivet

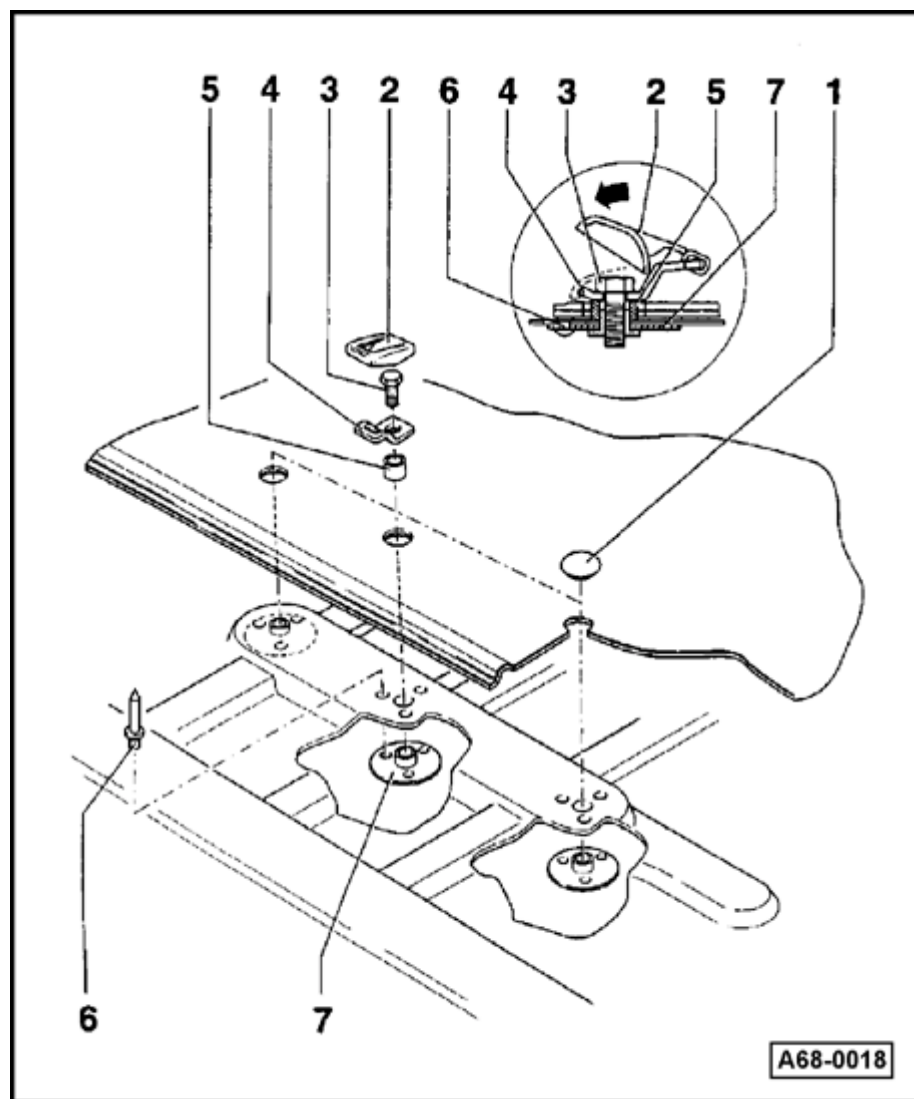
- ◆ Qty: 3 per plate
- ◆ To secure thread washer -7- on metal mounting
- ◆ Riveted from above (interior)

### **CAUTION!**

***The thread washer must always be installed from below (trunk side).***

### 7 - Threaded washer

- ◆ Secured on trunk side with pop rivets -6-
- ◆ Threaded insert points upward



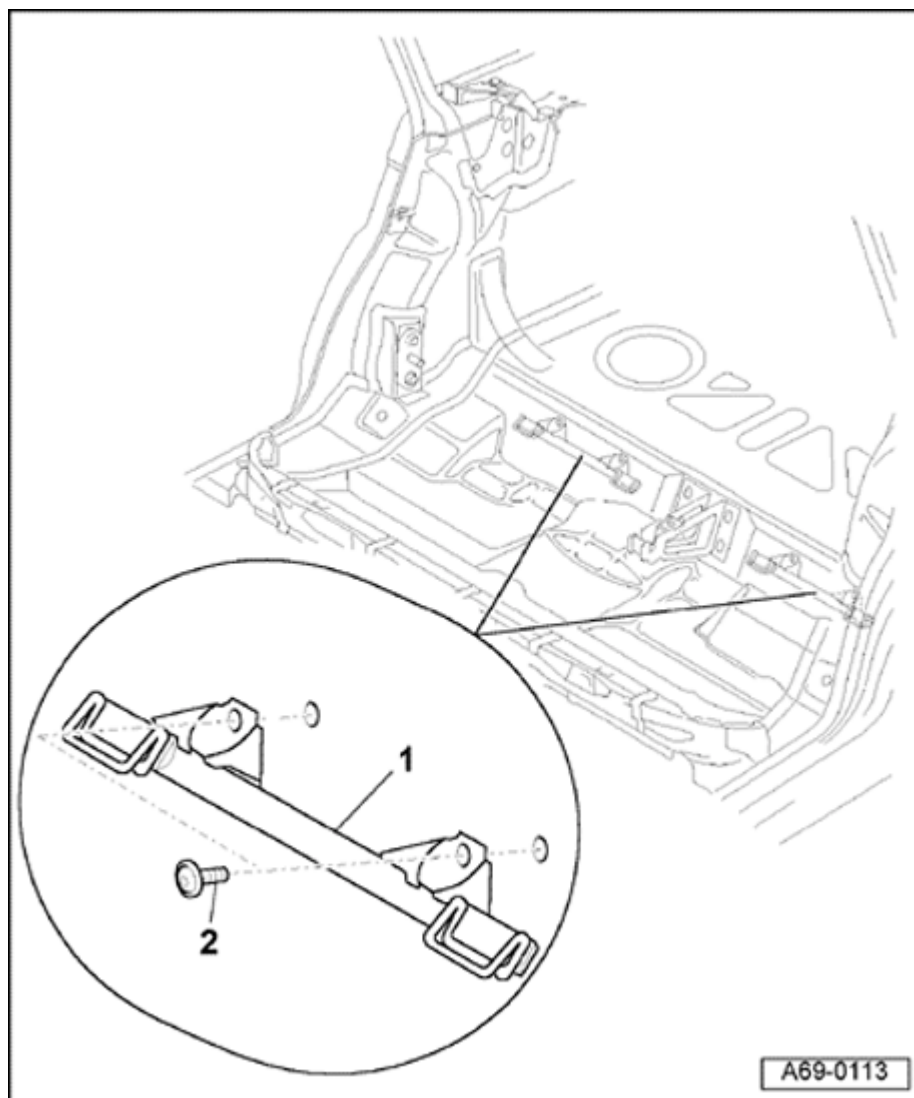
### Rear upper tethers, retrofitting

- Beginning in trunk, use felt tip marker to mark center point of center holes (3x).
- Remove rear shelf ⇒ [page 70-83](#) .

### **CAUTION!**

**The thread washer must always be installed from below (trunk side).**

- Install threaded washer -7- starting from trunk.
- Cut 23 mm hole at each marked point (3x).
- Install rear shelf.
- ◆ 1, 2, or 3 attachment stops can be installed as needed.
- Install spacer sleeve and secure attachment stop with bolt -3-.
- Close other holes using cover -1-.



## Rear lower anchors, installing

### 1 - Rear lower anchor bracket

- Remove rear seat ⇒ [page 72-57](#)
- Disconnect connectors
- Remove bolts -4- (2x).

### 2 - Bolts (4x)

- ◆ 30 Nm (22 ft lb)
- Mount rear lower anchor bar -1- with bolts -2- fastened into threaded holes in body floor panel.

### Notes:

- ◆ *To install solid rear backrest, push tabs behind rear lower anchor bracket.*
- ◆ *If rear lower anchor is retrofitted, it may be necessary to flatten tab in vise down to about 3 mm ⇒ [page 72-58](#)*
- ◆ *Inside anchors are not recommended for attaching rear lower anchors of a LATCH seat in the middle position. The three-point lap/shoulder belt should be used.*

## LATCH system, "Lower Anchors and Tethers for Children", installing, removing, retrofitting (Avant)

### Rear upper tethers

#### **Note:**

*Some A4 Avant models may require a seat back change for rear top tether installation.*

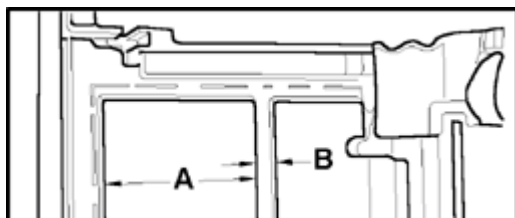
### Rear upper tethers (Avant), retrofitting (➤ m.y. 1998)

To retrofit the child seat attachment point on vehicles ➤ m.y. 1998, a backrest from m.y. 1999 or later must be installed.

- Remove old backrest.

⇒ [Repair Manual Body Interior Repair Group 72](#)

### 1/3 backrest



A

- Using sharp knife, carefully cut upholstery -1- at width of 30 mm (dimension -B-) down to indentation -2- (dimension -A- = 195 mm when measured from below).

**2/3 backrest**

- Using sharp knife, carefully cut upholstery at reinforcements.

**All backrests**

- Install new panel on backrest.
  - ◆ Note original color and cargo net version.

### Rear upper tethers (Avant), retrofitting (➤ m.y. 1998)

To retrofit the child seat upper tether points on vehicles ➤ m.y. 1998, a backrest from m.y. 1999 or later must be installed.

- Remove old backrest.

⇒ [Repair Manual Body Interior Repair Group 72](#)

#### 1/3 backrest

➤

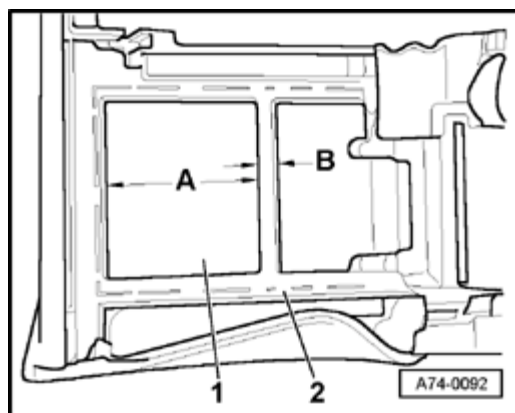
- Using sharp knife, carefully cut upholstery -1- at width of 30 mm (dimension -B-) down to indentation -2- (dimension -A- = 195 mm when measured from below).

#### 2/3 backrest

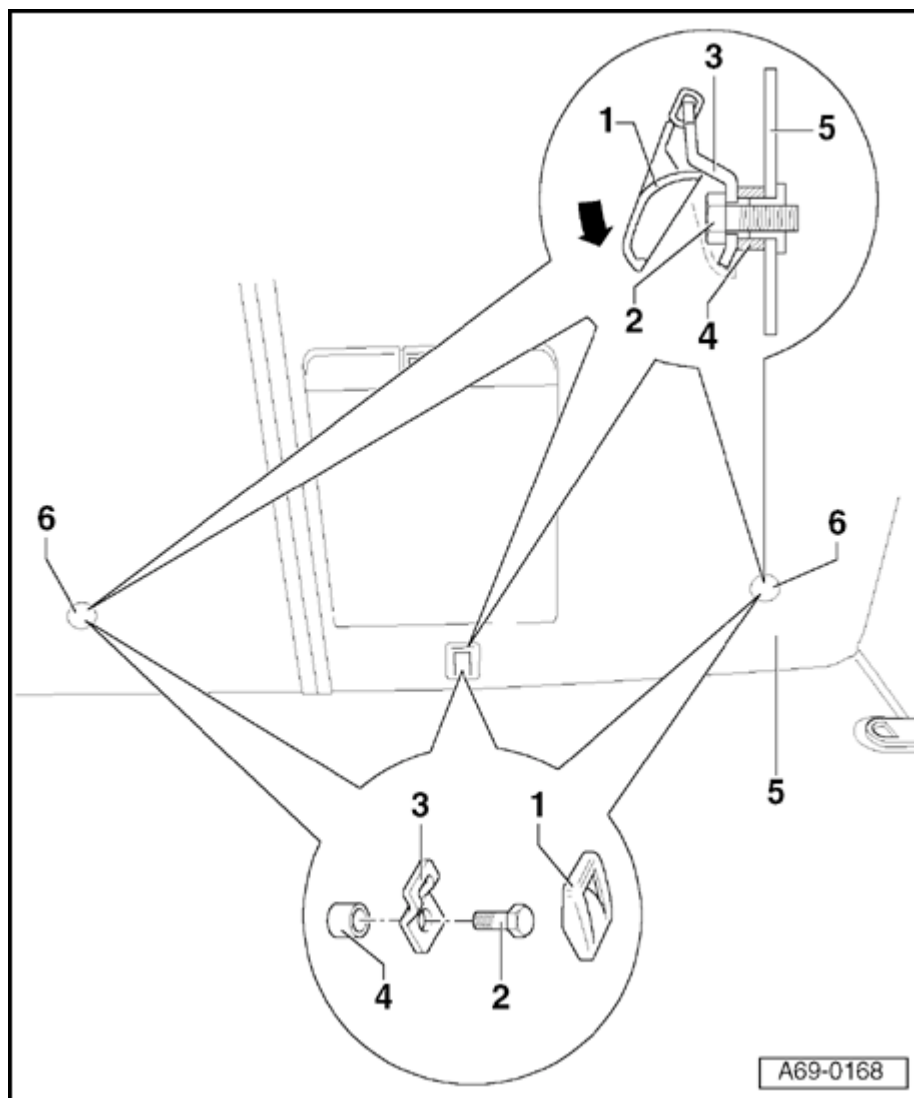
- Using sharp knife, carefully cut upholstery at reinforcements.

#### All backrests

- Install new panel on backrest.
  - ◆ Note original color and cargo net version.



69-34



### Rear upper tethers (Avant), removing and installing (m.y. 1999 ➤)

#### 1 - Cap

- ◆ To install, attach at front and press downward in direction of arrow

#### 2 - Bolt

- ◆ 23 Nm (17 ft lb)

#### 3 - Attachment point

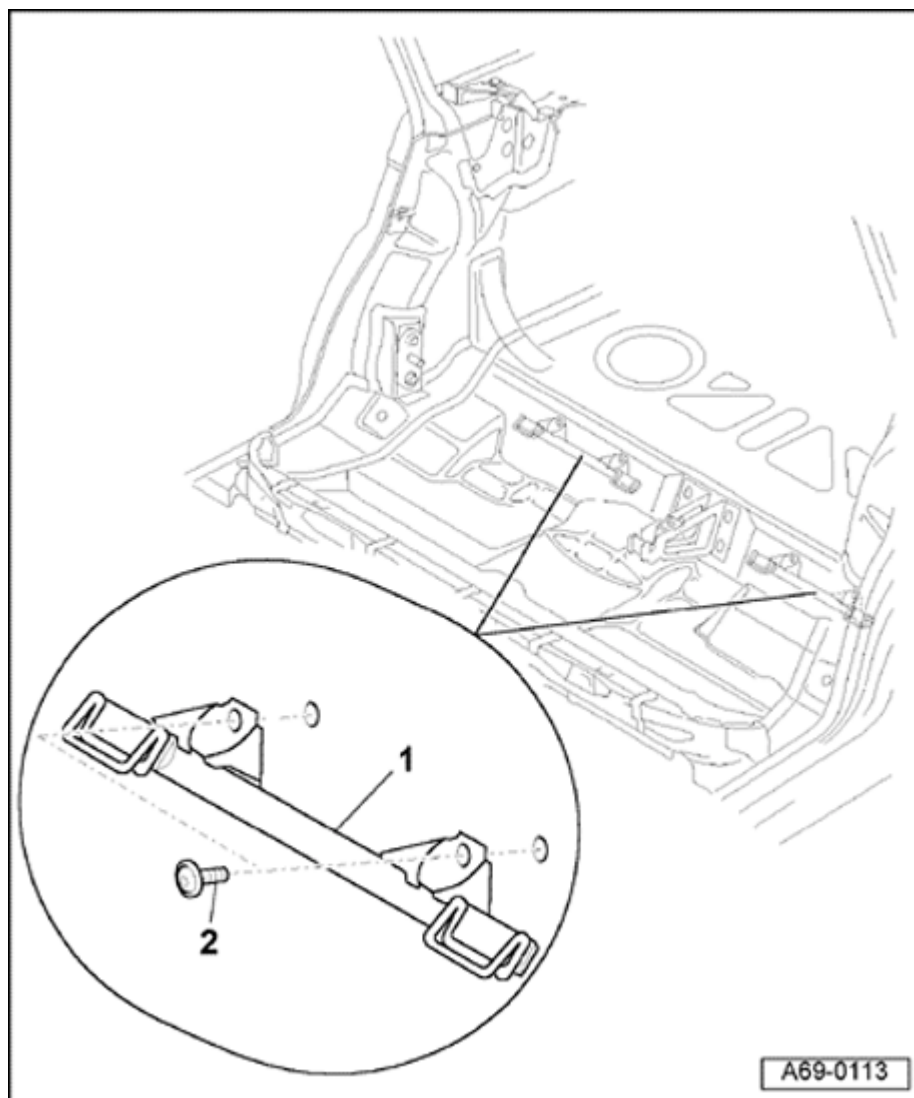
#### 4 - Spacer pulley

#### 5 - Backrest

#### 6 - Plugs

- ◆ Remove if necessary and attach items -1- through -4-





## Rear lower anchors, installing

### 1 - Rear lower anchor bracket

- Remove rear seat ⇒ [page 72-57](#)
- Disconnect connectors
- Remove bolts -4- (2x).

### 2 - Bolts (4x)

- ◆ 30 Nm (22 ft lb)
- Mount rear lower anchor bar -1- with bolts -2- fastened into threaded holes in body floor panel.

### Notes:

- ◆ *To install solid rear backrest, push tabs behind rear lower bracket.*
- ◆ *If rear lower anchor is retrofitted, it may be necessary to flatten tab in vise down to about 3 mm ⇒ [page 72-58](#)*
- ◆ *Inside anchors are not recommended for attaching rear lower anchors of a LATCH seat in the middle position. The three-point lap/shoulder belt should be used.*