

## Cylinder head and valve drive, servicing

### Component layout

#### **Note:**

*Always replace all seals and gaskets.*

#### **1 - Bearing cap**

- ◆ Installation position ⇒ [page 15-20](#)

#### **2 - 17 Nm (13 ft lb)**

#### **3 - Camshaft**

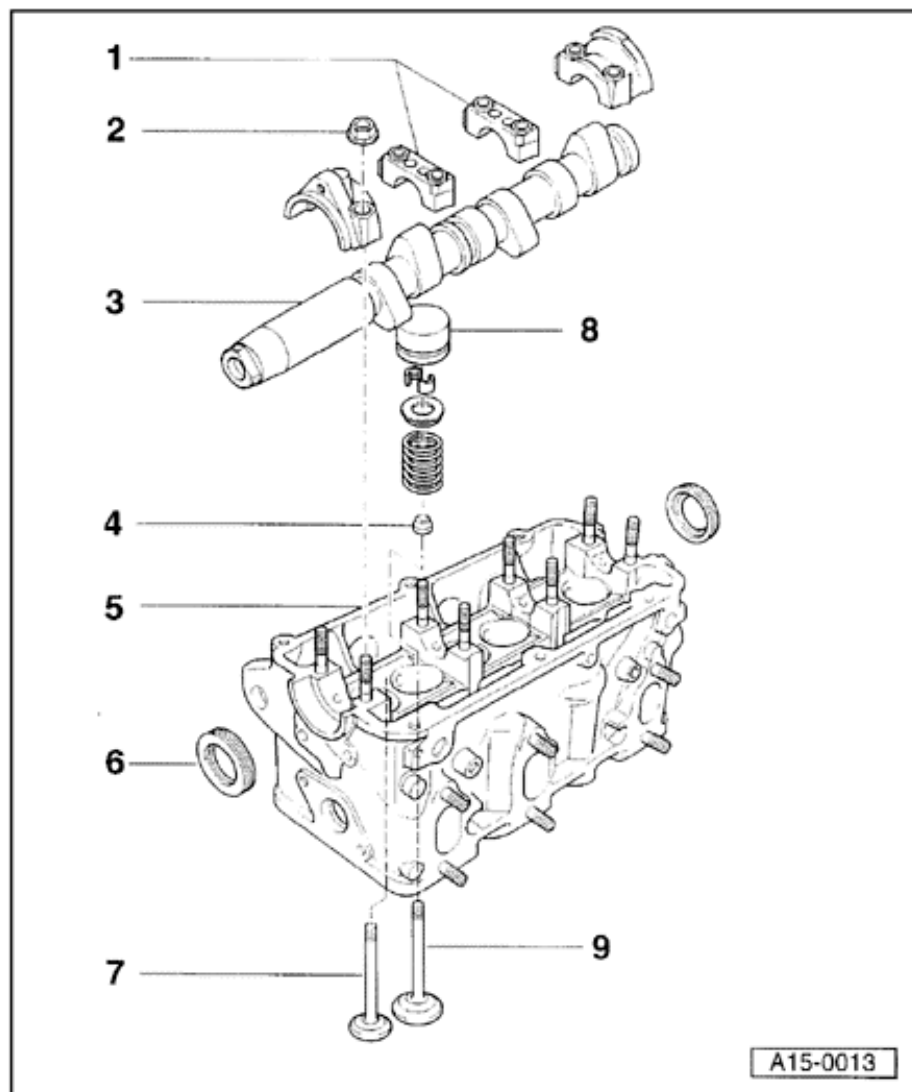
- ◆ Removing and installing ⇒ [page 15-19](#)
- ◆ Checking axial play ⇒ [page 15-21](#)
- ◆ Maximum runout: 0.01 mm (0.0004 in.)

#### **4 - Valve stem seal**

- ◆ Always replace
- ◆ Replacing ⇒ [page 15-24](#)

#### **5 - Cylinder head**

- ◆ Resurfacing ⇒ [page 15-26](#)
- ◆ Refacing valve seats ⇒ [page 15-31](#)



#### 6 - Oil seal

- ◆ Always replace
- ◆ Replacing ⇒ [page 15-10](#)

#### 7 - Exhaust valve

- ◆ Checking ⇒ [page 15-27](#)
- ◆ Checking and replacing valve guides ⇒ [page 15-29](#)

#### 8 - Hydraulic valve lifter

- ◆ Oil contact surfaces before installing
- ◆ Store with cam lobe contact surface facing downward
- ◆ Checking ⇒ [page 15-22](#)

#### 9 - Intake valve

- ◆ Checking and refacing ⇒ [page 15-27](#)
- ◆ Checking and replacing valve guides ⇒ [page 15-29](#)